



Tiger Lifting



www.tigerlifting.com

Home of the Tiger hoisting range & Tiger subsea lifting products

Tiger SS12 Corrosion Resistant Chain Block



with clevis adaptor and shackle



Spark Resistant Option



Main Features

- Suitable for use in multi-immersion applications
- DNV GL Verification tested according to NORSOK R-002
- Available with slipping clutch overload protection
- Fully Corrosion protected body and components to ensure reliable long term use
- Range from 500kg – 20000kg
- Over 1000 hours continuous protection
- Corrosion protected load and hand chain
- Marine specific friction discs
- Available with forged clevis adaptor components
- Rugged steel body construction
- Lightweight and portable
- Double cover protection for brake chamber
- Drop forged & heat treated alloy hooks
- Stainless steel fixings and fasteners
- Patented Quad Cam Pawl System
- Guaranteed 2% light load protection
- Heat treated alloy steel triple spur gears and pinion shaft
- -40°C to +50°C Operating temperature range
- Proof tested to 1.5 times rated capacity
- Can be chained to any height of lift to meet your exact requirements
- Marine chain bags available on request
- Individual spares readily available
- Also available with stainless steel load chain or spark resistant hooks
- Meets or exceeds all international standards





Tiger Lifting



www.tigerlifting.com

Tiger

Home of the Tiger hoisting range & Tiger subsea lifting products

Tiger SS12 Chain Block

The SS12 is manufactured from the highest quality steel materials, offering a lightweight, compact and rugged construction, producing an exceptionally strong product resistant to impact damage. With the added advantages of having been fully protected against corrosion using Tiger's OCP "Organic Corrosion Protection" formula that gives over 1000 hours continuous protection under ASTM B117 Salt spray conditions.

The exceptional short head room allows for easy installation where every centimetre must be achieved. Using only the highest quality materials precisely machined in our own factory, the SS12 is the ideal block for salt water use with less maintenance and servicing costs. These units meet and exceed all the requirements within BS EN 13157: 2004+A1:2009, ANSI/ASME B30.16, AS1418.2 and SANS 1594.

Certification:

Each unit comes fully certified with a test certificate or an EC Declaration of Conformity stating compliance with the essential health and safety requirements of the Machinery Directive 2006/42/EC. This document clearly states the proof test at 1.5 times the rated capacity and the light load test of 2% of the rated capacity, which exceeds the requirements of the current applicable standard.

Multi-Immersion:

After successfully completing a series of independent third party verification and testing programmes to established international standards, our latest being 3rd party multi-immersion tests at Catapult ORE in the UK, we can state that the SS12 range of chain blocks is suitable for use in multi-immersion applications providing the timescales, pre-use testing, maintenance and service requirements as detailed in Tiger document Multi-immersion Instruction Document 201603 are strictly adhered to.

Marine Friction Discs:

Developed and designed for Subsea use creating a highly efficient, reliable braking surface for use in the most extreme conditions.

Quad Cam Brake Pawl System:

This latest development in brake efficiency guarantees permanent engagement of at least one of the two reciprocating cam pawls fitted to the SS12. But most importantly, in the unlikely event of a pawl spring failure, this new design will ensure the brake is still fully functional and the load is sustained without damage to the mechanism.





Tiger Lifting



www.tigerlifting.com

Tiger

Home of the Tiger hoisting range & Tiger subsea lifting products

Safety Brake:

The highly efficient and fully corrosion protected brake system works instantly when the operation is stopped and securely holds the load. Loads are lowered under perfect control, allowing for precise operations. The SS12 easily passes the "brake lock out test" as per BS 3243:1990 with a 2% load of the rated capacity.

Load Chains:

Tiger only use the highest quality alloy, calibrated load chains in Grade 80 (T) or 100 (V) conforming to EN818-7 and ISO 16872. These chains have been protected using OCP protection without any loss of mechanical performance. The SS12 comes as 3.0mtr HOL as standard but can be chained up to whatever length is required. Stainless steel load chain available on request for certain capacities.



Hooks:

Drop forged and heat treated alloy hooks are furnished with heavy duty latch kits that fully engage into the nose of the hook offering maximum load security. The swivel hooks are attached to the yoke using high grade nuts & bolts allowing for complete inspection during any statutory inspection or written scheme maintenance. The entire hook fitting has been protected using OCP or stainless steel fixtures and fittings. Also available with spark resistant hooks.



Forgings:

Recessed forgings offer full protection to the load chain anchor bolts on all our bottom hooks.



Protection:

The SS12 has OCP protection on all the internal parts including load and hand chain ensuring over 1000 hours continuous protection.

Finish:

The SS12 is finished in our high quality white Akzo Nobel powder coat paint offering excellent additional corrosion protection. (Data sheets available on request.)





Tiger Lifting



www.tigerlifting.com

Tiger

Home of the Tiger hoisting range & Tiger subsea lifting products

Double Cover Protection:

Both the hand chain wheel cover and the ratchet brake cover are designed to offer protection to the brake chamber in the harshest environments from foreign objects.

High Performance Premium Grease:

Load carrying ability, mechanical stability, corrosion protection, water resistance and increased operating temperature ranges of -40°C to +50°C are all improved by the using only the very best lubricant.

Mechanical Efficiency:

All major components are heat treated and precisely machined to ensure long term smooth operation. High gear ratios keep physical effort to a minimum whilst complying to all the relevant standards.

Adaptor Components

Drop forged adaptor maintaining maximum strength. 360° Rotation and 180° Pivot for Maximum Flexibility. Tested and certified to 4:1 factor of safety.



Self-locking (safety) hook, clevis shackle, reeveable egg (master) link or sling hook fitting available.





Tiger Lifting



www.tigerlifting.com

Tiger

Home of the Tiger hoisting range & Tiger subsea lifting products



SS12 chain block with clevis adaptor and self-locking (safety) hook, reeveable egg (master) link and sling hook fittings

Chain Carriers:

All our SS12 chain blocks are available with chain bags on request to fit the exact amount of chain specified. Designed to carry and hold the exact length of load chain required for the operation. Incorporating a stainless steel frame work and heavy duty PVC flexible bag reinforced by webbing with eyelet drain holes for an easy transfer through the splash zone. These chain bags prevent loose chain from getting snagged during lifting or lowering operations and protect any loose chain during transit to and from the operational site.

Performance:

The SS12 has undergone a full test program that includes:

Type Testing

- Ultimate strength test, at least 4 times the Working Load Limit (WLL)
- Continuous cyclic testing of over 1500 cycles
- Chain end anchorage test, passing at least 2.5 times the WLL without any restriction of the brake or gears

Test on every hoist

- Proof loading at 1.5 times the rated capacity
- Light load testing at maximum of 2% rated capacity



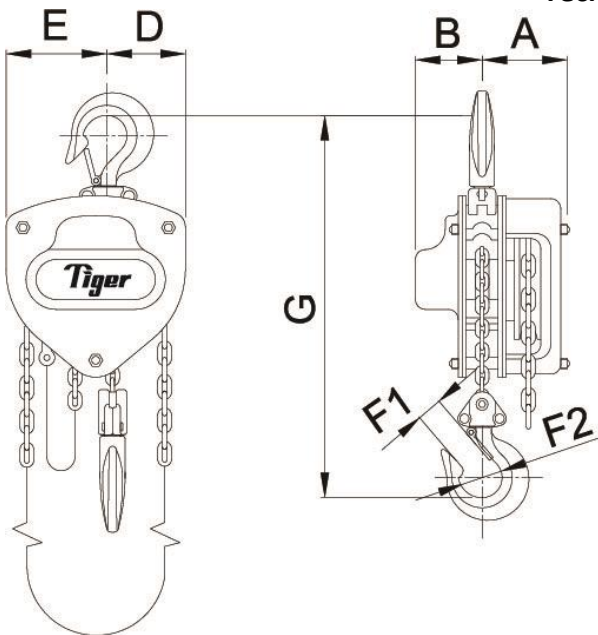


Technical Data

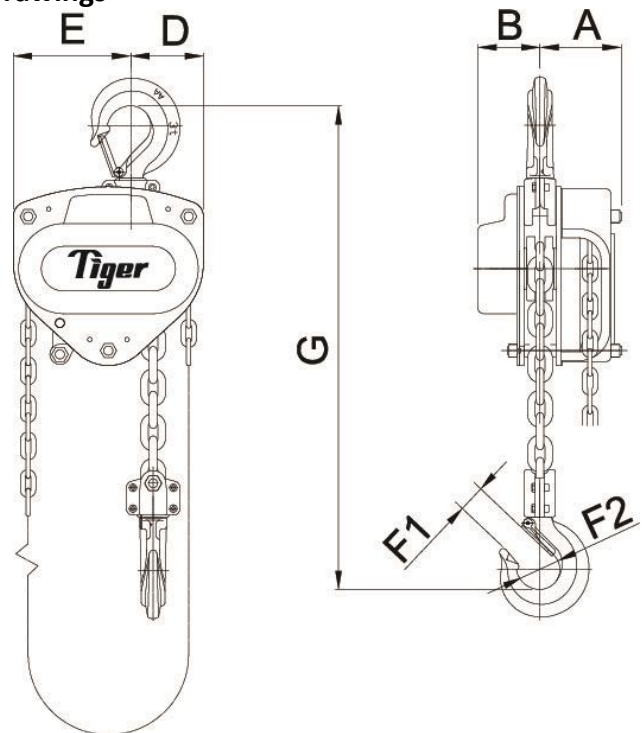
Product Code	Capacity (tonne)	Effort (kg)	Dimensions (mm)							Load Chain		Standard HOL (m)	Mass @ std HOL (kg)	Mass for extra metre HOL (kg)
			A	B	D	E	F1	F2	G	Diameter (mm)	No. of falls			
SCB-0050	0.5	21	93	66	52	78	24	38	305	∅6.3	1	3	10.8	1.86
SCB-0100	1.0	25	93	66	63	87	28	45	340	∅6.3	1	3	11.8	1.86
SCB-0150	1.5	32	98	73	78	102	34	51	385	∅7.1	1	3	16.2	2.10
SCB-0200	2.0	34	101	79	87	113	35	53	420	∅8.0	1	3	20.0	2.39
SCB-0300	3.0	38	109	84	98	157	36	56	550	∅10.0	1	3	30.6	3.17
SCB-0500	5.0	37	101	79	122	209	49	70	575	∅8.0	3	3	37.8	5.17
SCB-1000	10.0	40	109	84	153	263	54	87	660	∅10.0	3	3	64.0	7.54
SCB-2000	20.0	43	161	90	148	360	81	110	1050	∅10.0	6	3	178.7	14.20
SCB-3000	30.0	42	220	220	388	388	91	135	1200	∅10.0	10	3	306.9	23.80

See page 8 for more hook information

Technical Drawings



0.5t – 2.0t



3.0t single fall





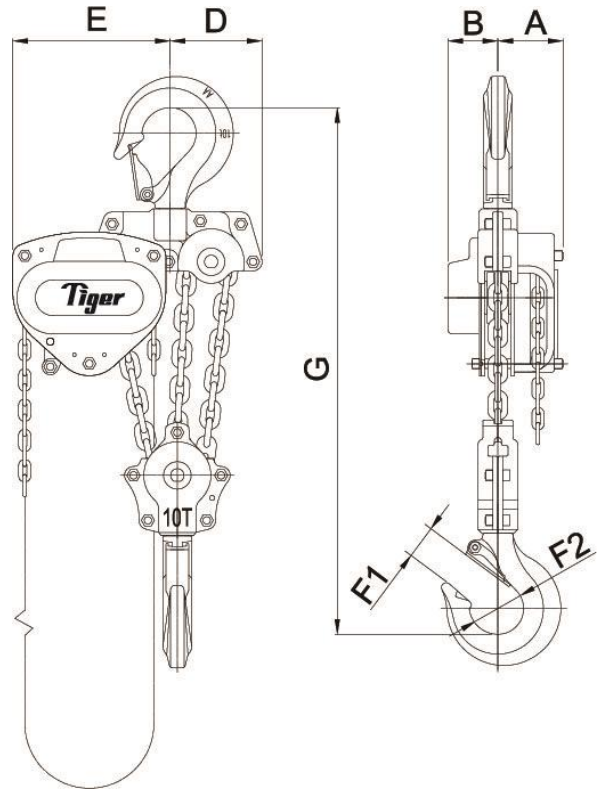
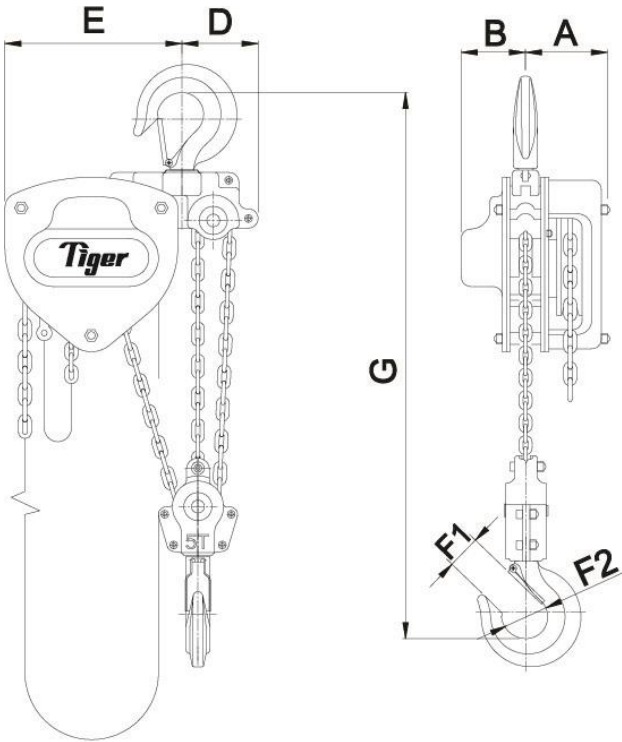
Tiger Lifting



www.tigerlifting.com

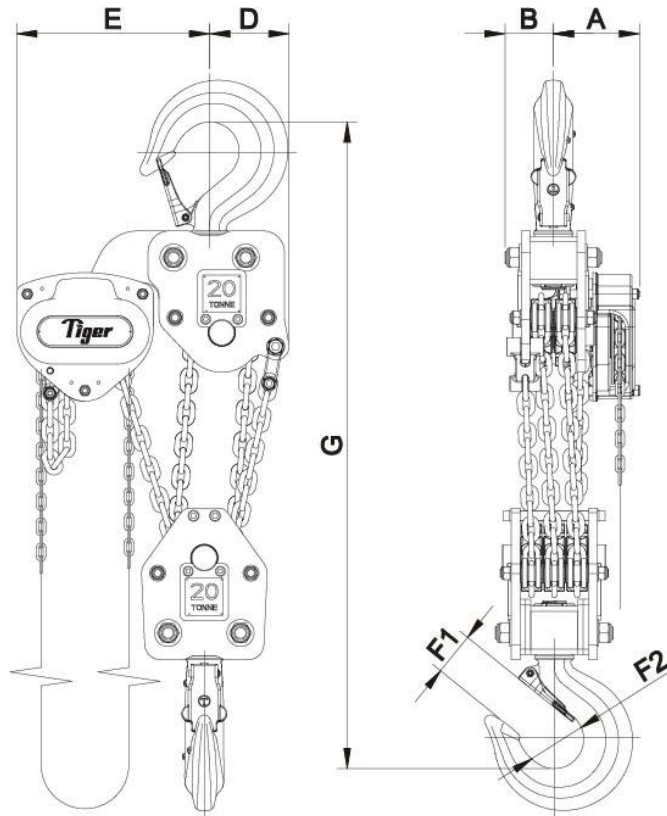
Tiger

Home of the Tiger hoisting range & Tiger subsea lifting products



5.0t

10.0t



20.0t





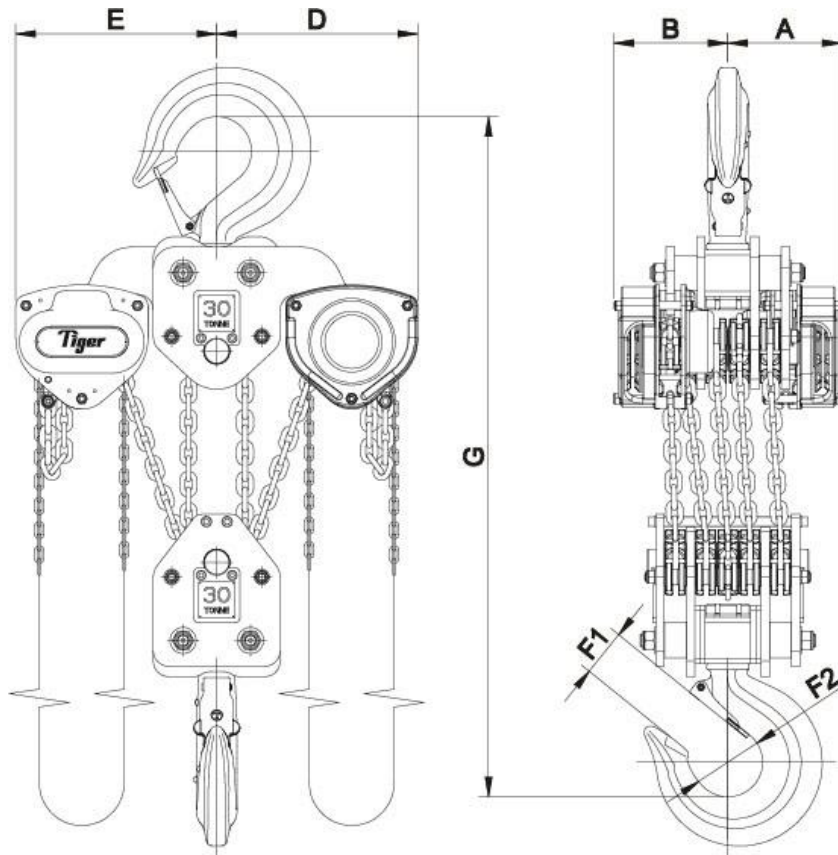
Tiger Lifting



www.tigerlifting.com

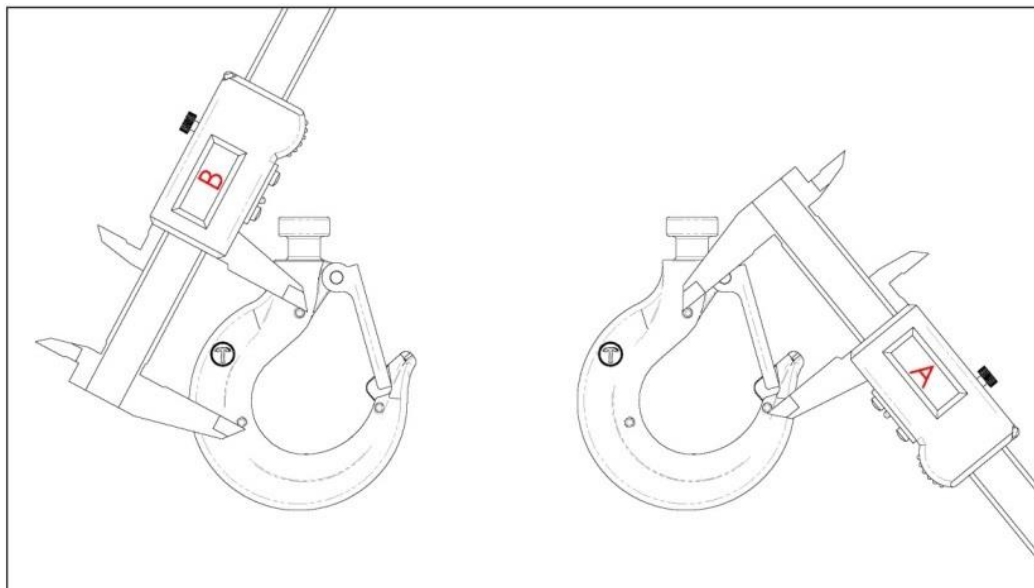
Tiger

Home of the Tiger hoisting range & Tiger subsea lifting products



30.0t

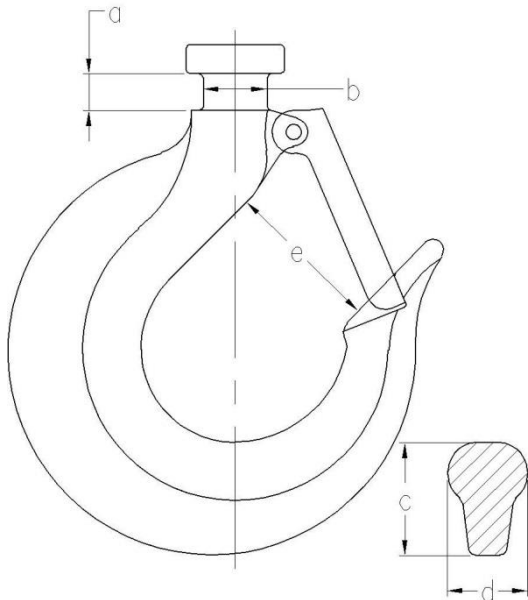
Newer models are fitted with the patent pending Tiger “EZ check” 3 point marking system. With this system a quick check that the A and B measurements are the same (as shown in the diagram below) will indicate if the hooks have stretched. If $A \leq B$ the hook is fine; If $A > B$ the hook needs to be replaced:



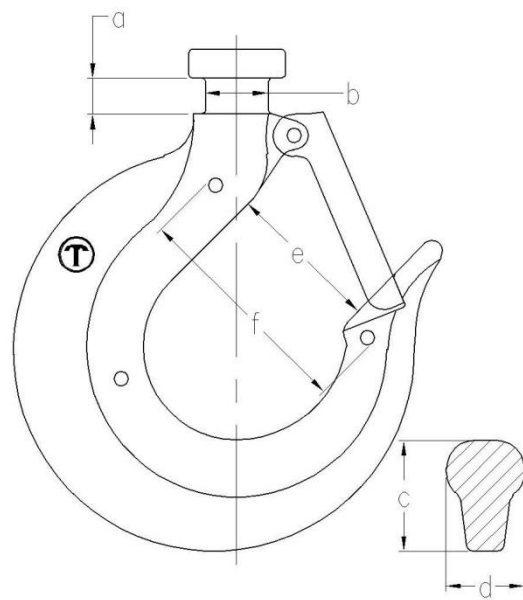


Hook Technical Data

Capacity (Tonnes)	Collar measurements (mm)		Hook thickness at point shown in diagram (mm)		Hook throat Opening (mm)	"EZ Check" measurement (mm)
	a	b	c	d		
0.5	8	13.5	19	15	29	47
1.0	8	13.5	23	17	34	52
1.5	10	15.5	26	21	39	59
2.0	10	17.5	30	22	42	64
3.0	12.5	20	37	32	42	76
5.0	19	30	43	36	58	86
10.0	20	33	52	48	70	121
20.0	-	48	77	72	90	162
30.0	-	56	94	78	102	177



Traditional Tiger Hooks



Tiger Hooks with new "EZ Check"
3 point marking system

Due to our policy of continual product development, dimensions, weights and specifications may change without prior notice. Please check with your Tiger sales team when ordering.

